A classroom scene with a whiteboard and a desk. The whiteboard is blue with a white border and contains the text 'STUDENT CENTERED FUNDING (SCF)'. To the left of the whiteboard is a white desk with a blue chair. On the desk, there is a blue container holding several pens and pencils. The walls are pink and there are windows on either side of the whiteboard. The floor is blue with white grid lines.

# STUDENT CENTERED FUNDING (SCF)

SCF ATTACHES A DOLLAR AMOUNT TO EACH STUDENT, GIVING THE PRINCIPAL A CONSTANTLY CHANGING BUDGET TO WORK WITH, AND FORCING THEM TO MAKE DECISIONS SOLELY BASED ON MONEY, NOT WHAT IS BEST FOR THE SCHOOL.



## CURRENT FUNDING PROCESS

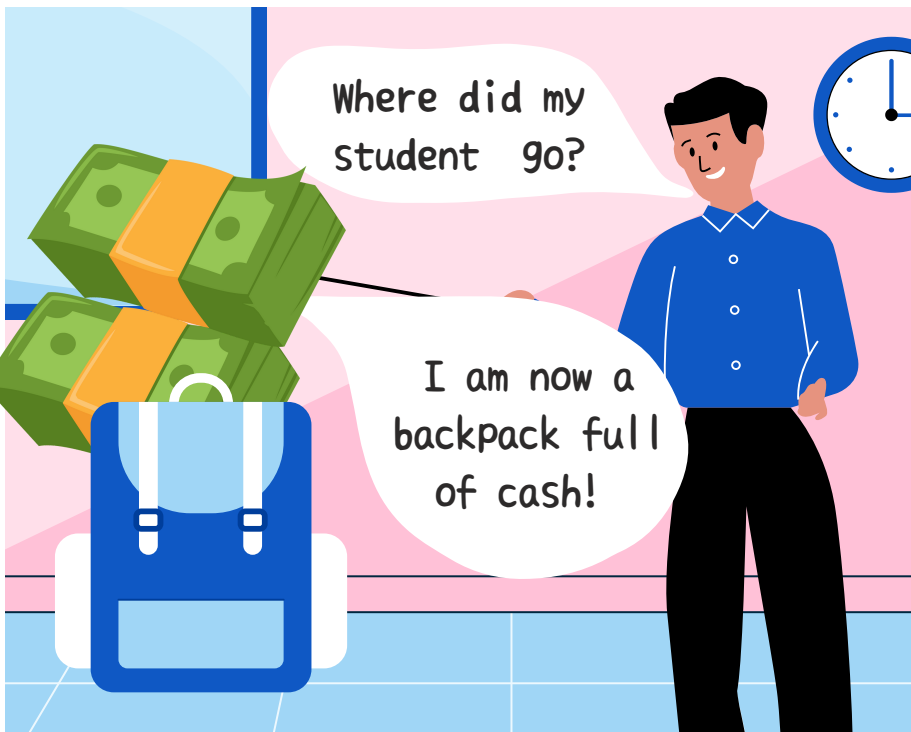
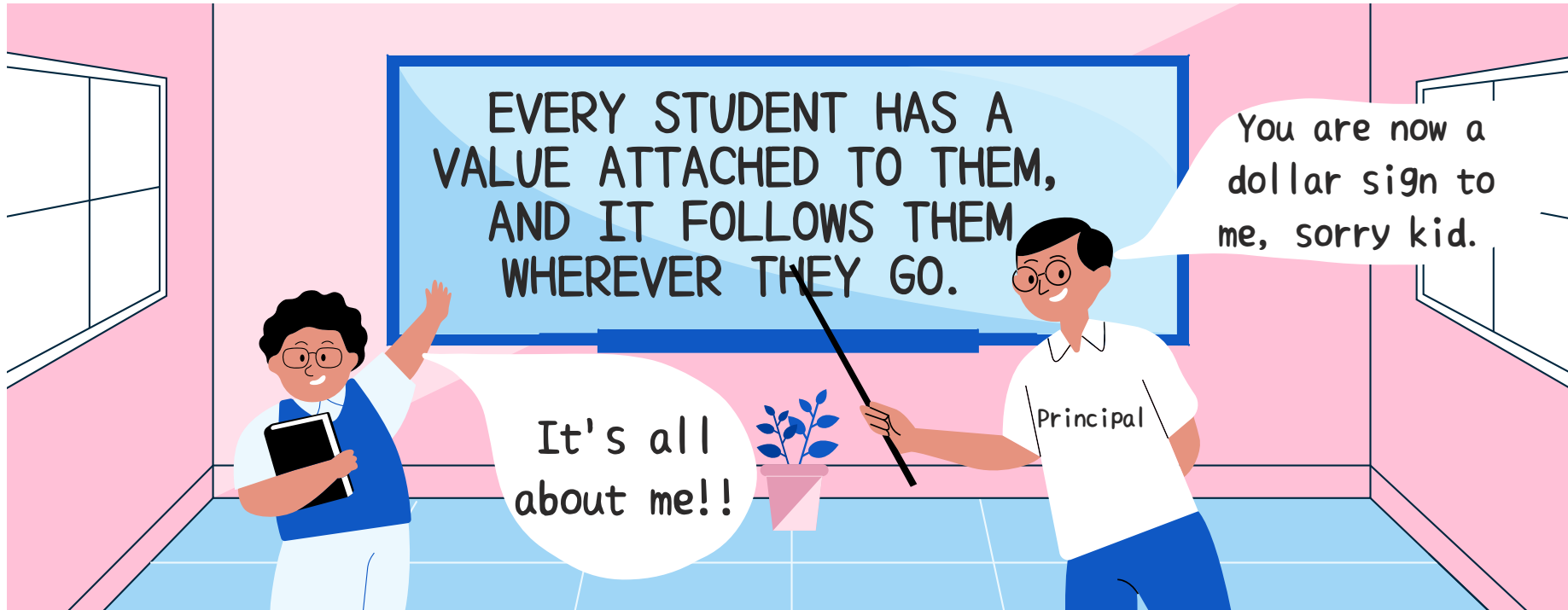
Our neediest schools receive the most money. In a district with over 80% of students living at or below the poverty line, that's a lot of schools.

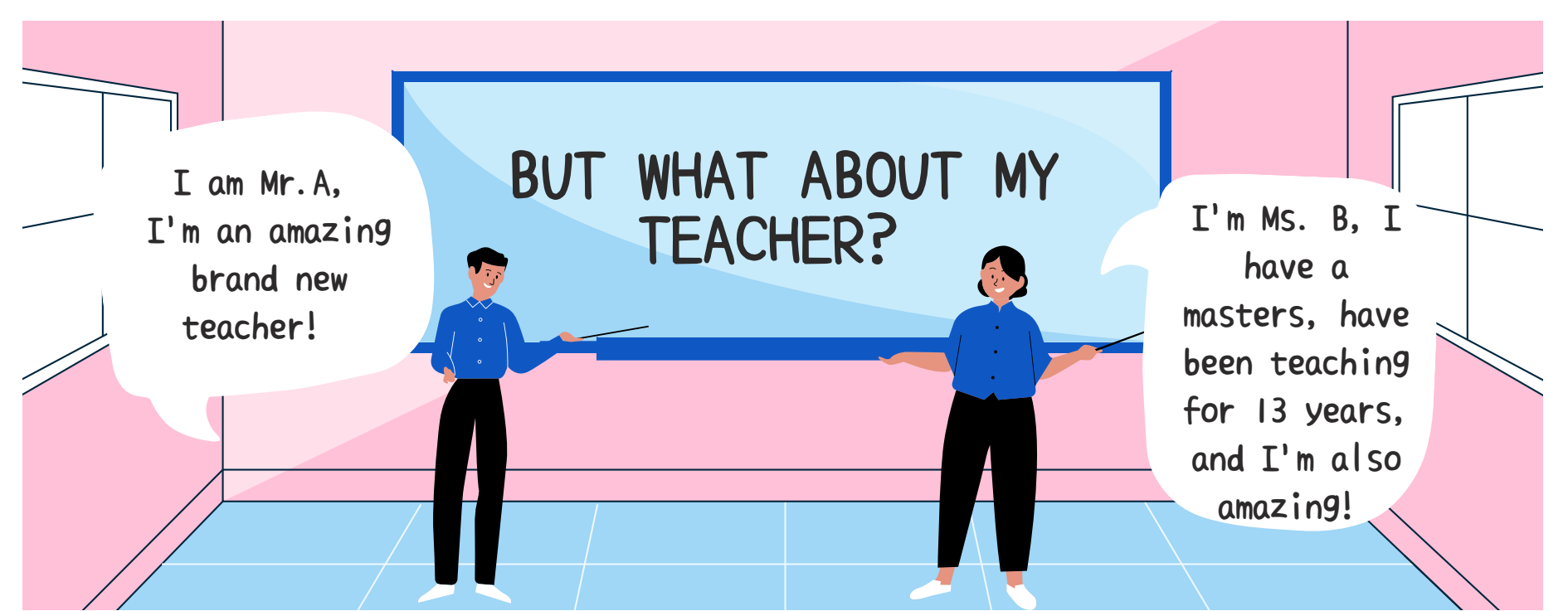
## SCF

Schools receive a constantly changing amount based on individual students, and principals now function as the CEO and CFO of a small business, and LAUSD has NO guardrails in place.

## SO WHAT'S THE PROBLEM?

IN A DISTRICT WITH SUCH A HIGH RATE OF POVERTY, WHEN YOU TAKE MONEY FROM ONE POVERTY STRICKEN SCHOOL TO GIVE TO ANOTHER, THERE ARE NO WINNERS. THIS IS NOT A ROBIN HOOD SCENARIO, SCF DOESN'T TAKE FROM THE RICH, IT TAKES FROM THE POOR.

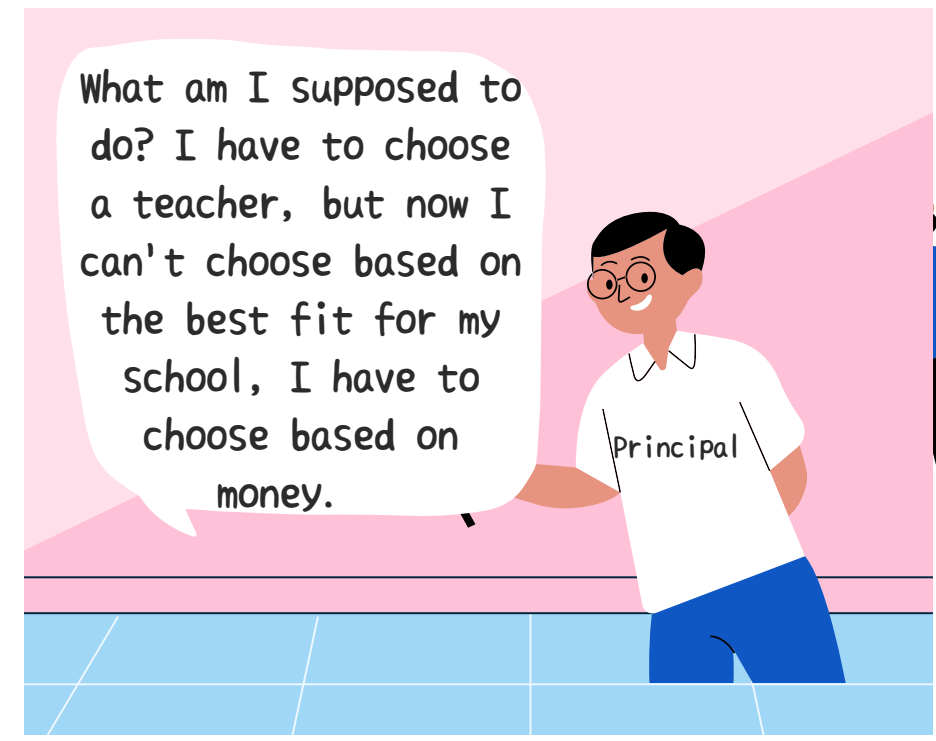




I am Mr. A,  
I'm an amazing  
brand new  
teacher!


BUT WHAT ABOUT MY  
TEACHER?

I'm Ms. B, I  
have a  
masters, have  
been teaching  
for 13 years,  
and I'm also  
amazing!



What am I supposed to  
do? I have to choose  
a teacher, but now I  
can't choose based on  
the best fit for my  
school, I have to  
choose based on  
money.

Principal



Bye Ms. B, we are going to  
miss you so much.



YOU

WHAT CAN I DO TO  
HELP MY SCHOOL?

EMAIL YOUR BOARD  
MEMBER!  
VOTE NO ON SCT!



george.mckenna@lausd.net  
monica.garcia@lausd.net  
scott.schmerelson@lausd.net  
nick.melvoin@lausd.net  
jackie.goldberg@lausd.net  
kelly.gonez@lausd.net  
tanya.franklin@lausd.net